



*Achieving excellence through the pursuit of good*

Bathwick St. Mary Church School  
Darlington Road  
Bath  
BA2 6NN  
01225 465654  
[office@bsm.bwmat.org](mailto:office@bsm.bwmat.org)  
[www.bathwickstmary.org](http://www.bathwickstmary.org)  
Headteacher: Mr. Kevin Purkiss



## Newsletter Five: February 2022

Dear Parents and Carers,

It was great to see so many families at Education Sunday earlier this week. **Thank you to all children** who volunteered to take part! From complex maths challenges, instructions for staying safe online, stunning artwork, creative writing in a number of subjects and even whirring space buggies – the presentation gave a real flavour of the engaging curriculum children benefit from at Bathwick.

### Chinese New Year celebrations

For several years 'SNAG' (School Nutrition Action Group) have promoted healthy nutritional choices for children. Recently, they have reworked and developed their name and mission statement. 'SNAG' is now 'FLAG' (Food for Living Action Group). The mission statement is:



*We promote a fun, healthy and balanced in-school **food culture**, supporting both staff and parents, to encourage healthy appetites, positive connotations, celebration of diversity and **eating well to feel well**. We seek opportunities to use food as a vehicle for **learning** and enjoy exploring the world on our plates. Using positive language, healthy ingredients and fun experiences, we encourage our children to have positive attitudes towards food both **nutritionally and mentally**. We seek a deeper understanding of the impact of our food choices on the **environment, the local community and on ourselves**. We want to maximise the **joy** in this essential aspect of our everyday; food not just for life but for living.*

In FLAGs first event, they led a collective worship teaching children Chinese greetings and customs for Tuesday's 'Chinese New Year' lunch. Thank you to all involved – it was a great experience for all children who learnt a little more about Chinese culture.



### Welcome to...

A very warm welcome to Hanan in Year 3. We hope you settle in quickly and are very happy here!

#### Getting to school on time...

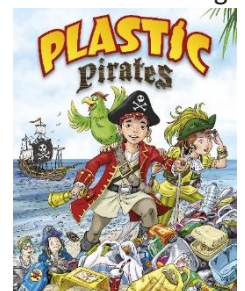
A polite reminder that the school gates are open from 8.40 a.m. and **all children should be lining up ready to start lessons promptly at 8.50 a.m.** We seek to provide the best education possible but this is hampered when children arrive too late. Please make every effort to arrive for 8.50 a.m. Children arriving much after this time will need to go via the main office doors as registers will close shortly afterwards. **Please do not go and knock on classroom doors as this disturbs the learning of other children.** Thank you for your support in getting your children to school on time.

### Parent Consultation Evenings (PCEs)

We are due to hold PCEs on Monday 14<sup>th</sup> and Thursday 17<sup>th</sup> February. Whilst we were hoping to run these in person at school, it very much depends on Covid cases in school nearer the time. We will use the School Cloud booking system which will give us the option of both in school or online PCEs. Parents and carers will receive a separate email later this week with booking instructions on.

### 'Plastic Pirates' in Y3 & Y4

We are excited to share that the Year 3 and 4 production this year will be 'Plastic Pirates'. The performing arts are a key part of our curriculum offer at Bathwick and we will always seek to give each child, every year, the chance to star on stage and perform to a live audience. All children across the school will be able to enjoy the dress rehearsal at the end of term 4. Please can Y3/4 keep the correct dates free for performances:



- **Year 4** - Monday 4th April 2022 at 1:45pm
- **Year 3** - Tuesday 5th April 2022 at 1:45pm
- Wet weather back up: 6th April at 1.45pm

### Local Governing Committee update

As part of our action plan to bring the Local Governing Committee closer to the school community, more visible and more accessible, we intend to report more regularly in the school newsletter some of the key topics being discussed. Our hope is that this will give people greater knowledge and confidence to actively engage in opportunities to feedback to governors and we intend to back this up with more after school drop-in sessions and other initiatives to make ourselves more available. In this first update since the lockdowns, we also thought it would help if we set out some details of the mechanics of governance.

### How do we operate?

Broadly, the purpose of the Local Governing Committee is to work alongside school leaders to ensure that the school is running effectively and act as a 'critical friend', providing appropriate challenge and support so the school meets its strategic objectives.

In addition to meeting as a full governing committee we are all assigned to one or more sub-committees, for example Curriculum & Standards, Ethos, Admissions and Resources. These committees meet regularly and include Mr. Purkiss and other staff. We also have roles where we are responsible for monitoring and challenging the school's performance and practices in a certain area, for example, safeguarding, Special Educational Needs and Disabilities (SEND), pupil premium, and curriculum areas.

### A summary of some current actions:

This year, our School Development Plan (SDP) contains four strategic goals. This was shared earlier in the year but is again attached to this month's newsletter for ease of reference. In our January meeting, we reviewed the most recent Autumn assessment data for our school and analysed the (anonymised) progress of groups and classes, considering areas of strength and identifying any areas for improvement. In addition, we considered the approach to pupil premium, SEND, staff wellbeing, 'Safer Routes to School' and environmental sustainability. Today, several governors were at school to review Read, Write Inc., SEND and Pupil Premium provision.

Please look out for the governor updates in the newsletter as we build on our ambition to increase engagement and awareness of the way we work and what is being addressed.

*Lucy Spedo Mirandola and Ben Jenkins*  
Co-Chairs of the Local Governing Committee (LGC)

To contact the LGC, please email:  
[office@bsm.bwmat.org](mailto:office@bsm.bwmat.org) marking the email for  
Governor attention

### Her Majesty's Platinum Jubilee

As part of plans in school for marking Her Majesty's Platinum Jubilee we are delighted to support a unique tree planting initiative, 'The Queen's Green Canopy'. More details will follow, but if you would like to be involved – [please have a look here](#).



### Rising Covid-19 cases

You will already be aware that unfortunately over the last few days we are seeing a rapid rise in Covid cases in the junior classes, especially in years five and six. Thank you to all parents and carers who are regularly testing their children using lateral flow devices (the tests are available via community testing sites, local pharmacies or you can order [online](#) for home delivery).

Whilst Covid impacts everyone in different ways and for the majority it is a mild illness, there are some in our school community who have been significantly impacted. Our thoughts are with our office Manager, Lorraine Harper, and Emily Hoskin, Year 3 teacher, who are both still unwell several months after contracting the illness. We are pleased to welcome Lorraine back for a few hours each week on a phased return. Thank you to all staff who are covering for others' absences to ensure our children's education and wellbeing remains paramount.

### COVID Update: Changes to Government guidance.

Please note the latest guidance:

**The 10 day self-isolation period for people who record a positive PCR test result for COVID-19 has been reduced to 6 days in most circumstances**, unless you cannot test for any reason. Individuals may now take LFD tests on day 5 and day 6 of their self-isolation period. Those who receive two negative test results are no longer required to complete 10 full days of self-isolation. The first test must be taken no earlier than day 5 of the self-isolation period and tests must be taken 24 hours apart. This also applies to children under 5, with LFD testing at parental or guardian discretion. If both these test results are negative, and you do not have a high temperature, you may end your self-isolation after the second negative test result and return to your education setting from day 6. Anyone unable to take LFD tests will need to complete the full 10 day period of self-isolation.



## World Book Day – dress up as your favourite book character!

We are celebrating World Book Day on **Thursday 3<sup>rd</sup> March**. Thank you to Miss. Bowman and Mrs. Turner who have organised several exciting events coming up around World Book Day. Please look out for information about a Readathon where we are trying to raise **£1000 for books for our school!**

The **Scholastic Book Fair** will take place from Wednesday 9<sup>th</sup> – Tuesday 15<sup>th</sup> March. More details will follow. All books sold earn rewards for the school, enabling us to buy new books. We look forward to seeing you there!

### Term dates for **22-23 Academic Year**

We will follow the [B&NES School calendar](#). Thursday 1<sup>st</sup> and Friday 2<sup>nd</sup> September will be INSET days, so children will start on Monday 5<sup>th</sup> September 2022.

Term 3 Dates for the Diary	
<b>February</b>	
2	Y4 to Wells Cathedral
3	OWL YEAR 5
7	Children’s Mental Health Week
8	Safer Internet Day
9	Year 6 to Victoria Art Gallery - am Year 2 to Victoria Art Gallery - pm
10	OWL YEAR 2
11	BANES Y4 Multi-skills Festival @ Bath Uni
14	PCEs 15:30 – 17:30
17	OWL YEAR 6 PCEs 15:30 – 19:30
Term 4 Dates for the Diary	
<b>March</b>	
2	Newsletter
3	World Book Day celebration
9	9 <sup>th</sup> - 15 <sup>th</sup> BOOK FAIR
10	OWL YEAR R
14	British Science week (11-20 March)
17	OWL YEAR 1
18	Red Nose Day
21	World Down Syndrome Day
24	OWL YEAR 4
31	OWL YEAR 2
1	Plastic Pirates Dress Rehearsal to whole school
<b>April</b>	
4	YEAR 4 – Plastic Pirates production: 1:45pm
5	YEAR 3 – Plastic Pirates production: 1:45pm
6	Newsletter Back up wet weather Plastic Pirates at 1:45pm
7	OWL YEAR 6
8	Easter Service. 1.30 p.m. St. Mary’s Church

## Britannica children’s non-fiction magazine

A reminder that we are taking part in a new reading initiative that you and your child may be interested in. Britannica Magazine is launching a new, exciting children's non-fiction magazine to engage children in reading, support child development and academic ability, and explore interests without screentime. If you sign up to an annual subscription, you'll receive a free copy of the Britannica Children's Encyclopaedia (worth £25).

What's more, for every ten families who subscribe to the magazine under our school's name by 1st March 2022, we'll receive £100 (max. £1,000) to spend on non-fiction books for our classrooms and library, and support our school's reading initiatives for this year. Please ensure that you select our school's name from the drop-down menu.

If you would like to take a look at the launch issue, you can [view it here](#) or you can view a short [video about the magazine here](#). We're really excited to be part of this initiative to get children reading and engaged in fun, exciting non-fiction stories, facts, jokes, and more. Please consider subscribing online at [britannicamagazine.com](http://britannicamagazine.com). And please remember to choose Bathwick St Mary Church School at the online checkout to make sure your subscription counts towards our free books!

### Allergies in school

We have children in school who have **life-threatening allergies** to nuts, sesame seeds, and products containing sesame (sesame can be found on or in a variety of food, including on rolls, bread, oil, hummus). We take all our children's safety extremely seriously and as such there is a **school wide ban on nuts and sesame products (this includes bringing snacks after school for your children or during clubs time)**. Thank you for your continued vigilance and support.

### Severe weather

In the event of very severe weather, it may be necessary to close or partially close the school. We will always do our very best to remain open, but with many staff living outside of Bath, due consideration is given to safe travel. If we need to close the school we will **email and text all parents and carers and update our website homepage**.

### Save the date(s)

In addition to the dates to the left, a reminder of some key events in the year ahead:

- 27<sup>th</sup> – 29<sup>th</sup> **April**, Year 5 to Dean Field
- 6<sup>th</sup> – 10<sup>th</sup> **June**, Year 6 to Isle of Wight
- 22<sup>nd</sup> – 24<sup>th</sup> **June**, Year 4 to Magdalen Farm
- Wednesday 20<sup>th</sup> **July**, Leavers Service 1.30 pm.





We are regularly dedicating a section of our newsletter to wellbeing resources aimed at children and families.

## Expressing Our Feelings with "I STATEMENTS"

Using "I statements" allows you to voice your needs and set personal boundaries with confidence, without accusing the other person.

To be most effective, "I statements" need to include 3 elements, in any order:

- 1) What you observe  
- I hear, I believe I observe, I see, I think, I noticed
- 2) How it makes you feel  
- I feel, I am experiencing
- 3) What you need to happen next  
- I need, I want, I prefer

Bath & North East Somerset Council **The HUB**

- FREE MindEd training: [MindEd](#) offer free online training courses and advise for parents and carers.
- *MindEd* information on '[Parenting in a Digital World](#)'

### Support:

- [School Website](#): There are lots of places for advice that can be accessed on our website on the 'Safeguarding' tab.
- BANES Hub: The BANES Hub has lots of great resources, many of which were put in place to support children in response of the Covid pandemic:
  - <https://thehub.bathnes.gov.uk/Page/20447>
  - <https://thehub.bathnes.gov.uk/Page/20800>

## FIVE WAYS TO WELLBEING

INTRODUCE THESE FIVE SIMPLE STRATEGIES INTO YOUR LIFE & YOU WILL FEEL THE BENEFITS



DO WHAT YOU CAN, ENJOY WHAT YOU DO, MOVE YOUR MOOD



TALK & LISTEN, BE THERE, FEEL CONNECTED



YOUR TIME, YOUR WORDS, YOUR PRESENCE



REMEMBER THE SIMPLE THINGS THAT GIVE YOU JOY



EMBRACE NEW EXPERIENCES, SEE OPPORTUNITIES, SURPRISE YOURSELF

Mental Health Foundation  
THINKS ED, THINKS 678  
[www.mentalhealth.org.uk](http://www.mentalhealth.org.uk)

### Your questions, queries and feedback...

Please do stop me in the playground or make contact to share ideas, concerns or questions. It is by working in positive partnership that our children will continue to thrive!

With kind regards,  
Kevin Purkiss, Head Teacher

# Bathwick St. Mary School Term and Holiday Dates – 2021-2022

**NO HOLIDAYS SHOULD BE TAKEN IN TERM TIME**

AUGUST 2021						SEPTEMBER 2021					OCTOBER 2021								
M		2	9	16	23	30	M		6	13	20	27	M		4	11	18	25	
T		3	10	17	24	31	T		7	14	21	28	T		5	12	19	26	
W		4	11	18	25		W	1	8	15	22	29	W		6	13	20	27	
TH		5	12	19	26		TH	2	9	16	23	30	TH		7	14	21	28	
F		6	13	20	27		F	3	10	17	24		F	1	8	15	22	29	
S		7	14	21	28		S	4	11	18	25		S	2	9	16	23	30	
SU	1	8	15	22	29		SU	5	12	19	26		SU	3	10	17	24	31	
NOVEMBER 2021						DECEMBER 2021					JANUARY 2022								
M		1	8	15	22	29	M		6	13	20	27	M		3	10	17	24	31
T		2	9	16	23	30	T		7	14	21	28	T		4	11	18	25	
W		3	10	17	24		W	1	8	15	22	29	W		5	12	19	26	
TH		4	11	18	25		TH	2	9	16	23	30	TH		6	13	20	27	
F		5	12	19	26		F	3	10	17	24	31	F		7	14	21	28	
S		6	13	20	27		S	4	11	18	25		S	1	8	15	22	29	
SU		7	14	21	28		SU	5	12	19	26		SU	2	9	16	23	30	
FEBRUARY 2022						MARCH 2022					APRIL 2022								
M		7	14	21	28		M		7	14	21	28	M		4	11	18	25	
T	1	8	15	22			T	1	8	15	22	29	T		5	12	19	26	
W	2	9	16	23			W	2	9	16	23	30	W		6	13	20	27	
TH	3	10	17	24			TH	3	10	17	24	31	TH		7	14	21	28	
F	4	11	18	25			F	4	11	18	25		F	1	8	15	22	29	
S	5	12	19	26			S	5	12	19	26		S	2	9	16	23	30	
SU	6	13	20	27			SU	6	13	20	27		SU	3	10	17	24		
MAY 2022						JUNE 2022					JULY 2022								
M		2	9	16	23	30	M		6	13	20	27	M		4	11	18	25	
T		3	10	17	24	31	T		7	14	21	28	T		5	12	19	26	
W		4	11	18	25		W	1	8	15	22	29	W		6	13	20	27	
TH		5	12	19	26		TH	2	9	16	23	30	TH		7	14	21	28	
F		6	13	20	27		F	3	10	17	24		F	1	8	15	22	29	
S		7	14	21	28		S	4	11	18	25		S	2	9	16	23	30	
SU	1	8	15	22	29		SU	5	12	19	26		SU	3	10	17	24	31	

School Term Dates:	
Holiday Dates:	(Children not in school)
Inset Days:	(Children not in school)
Bank holidays:	(Children not in school)

The 22/23 academic year begins for children (1<sup>st</sup> and 2<sup>nd</sup> September are INSET days) on **Monday 5<sup>th</sup> September 2022**.